

Surveillance Solution

All-in-One Smart CCTV Box

Plug & Play Platform Independent

Intuitive Interface Robust & Maintenance Free Operation

Simple, Easy and Accurate

SmartVeillance Lite is a smart 'All-in-One Box' surveillance solution that includes Analytical Engines, a Camera Monitoring Station and Video Storage, on a Linux Platform that is Robust & Secure. It supports 10 – 20 cameras and comes with an intuitive interface, providing the simple setup of smart engines for analytics and monitoring. Unlike most CCTV systems, SmartVeillance Lite offers easy connection to and controls for analog and network cameras.

Users can define object sizes for detection via SmartVeillance, allowing the system to make accurate judgments during activity detection.

Intuitive Interface

The system comes with a complete CCTV monitoring interface for quick and effective response to events. All alarms and alerts are channeled to a single interface for ease of operator scrutiny and action.

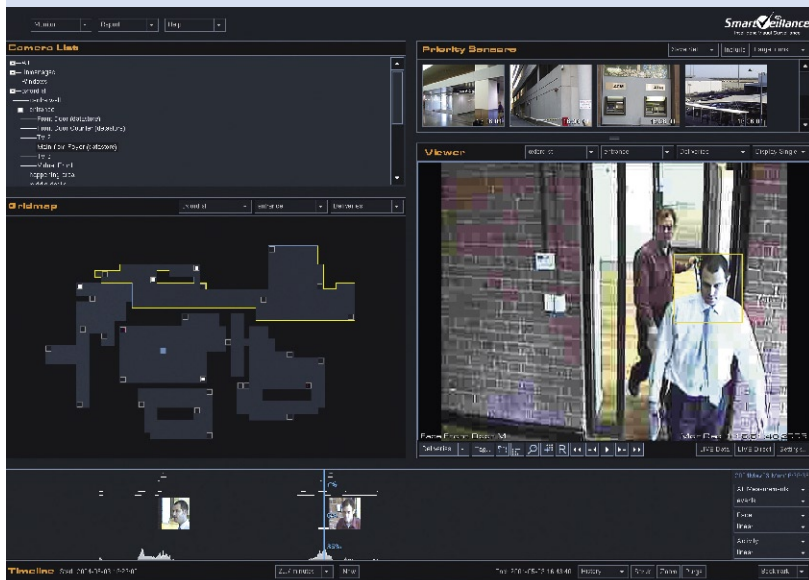
Smart Web View

All live videos and recorded videos are viewable from any standard web browser on any platform (eg. Windows, Linux, etc) through the SmartVeillance Web Viewer.

All configurations can be made via the SmartVeillance Web Configuration interface with step-by-step configuration for users to add or delete cameras in the system. The window shows the status of all configured cameras, storage used and license availability.

VSW interface features:

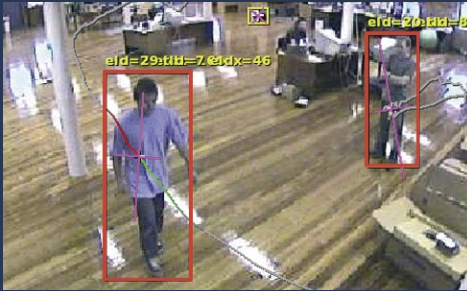
- 1. Priority Sensor Window**
 Immediate presentation of the video of the triggered camera for the operator to take action.
- 2. Main Viewing Window**
 Display for live and recorded events much like a DVD player. Operators may tag recorded frames with comments and sketches, allowing for quick retrieval later. All tags are recorded in the video records and published together inside the timeline.
- 3. Gridmap Window**
 Map reference of cameras in the facility. Present status of camera – connected, disconnected, no video, etc.
- 4. Timeline Window**
 Shows camera recordings along with all analyzed information and reference to time. Information such as face captured, speed detected or object count are displayed together with the activity track to save the operator from needing to review all records to detect event triggers.



System Features

Advance Activity Detection

- Multi Object Detection
- Object Sizing
- Perimeter Breach Detection



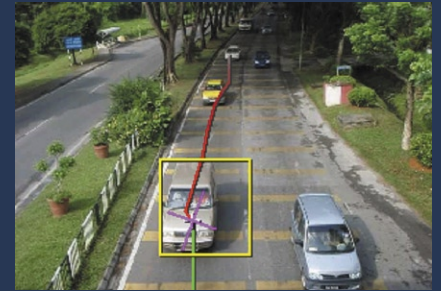
Counting Engine

- Human and vehicle
- Statistical reports
- Queue Management



Speed Detection

High, Low and Speed Range



Left Object Detection

Detects any illegally left objects in scene



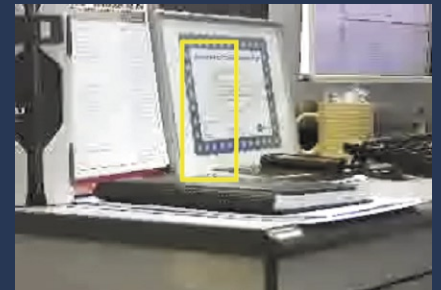
Illegal Parking Detection

Detects illegally parked vehicles



Asset Removal Detection

Detects objects missing from scene



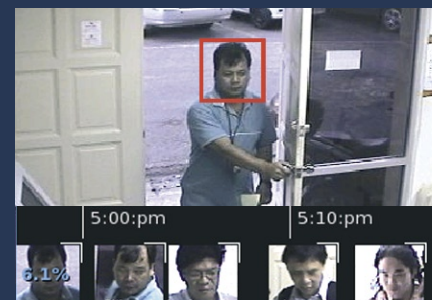
Directional Detection

Detects directional movement of object



Face Detection

Detects and plots face into timeline



Basic Engine & Activity

1. Continuous Recording
2. Camera Moved
3. Camera Blurred
4. Basic Motion Detection



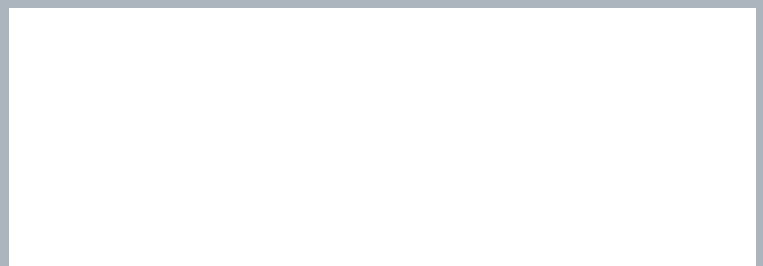
Copyright © 2009. All information contained herein is subject to change without notice. All rights reserved.

Sales Contact:

Kuala Lumpur Tel: (60) 3-27158648
Penang Tel: (60) 4-6469268
Johor Bharu Tel: (60) 7-3516721
Kuching Tel: (60) 82 369622
Miri Tel: (60) 84 426117
Kota Kinabalu Tel: (60) 88-715 288

Brunei Tel: (673) 2652056

For Demo and enquiries, please contact:



Visit : www.smartveillance.com