

i-SALaM (Integrated System for All Land Matters)



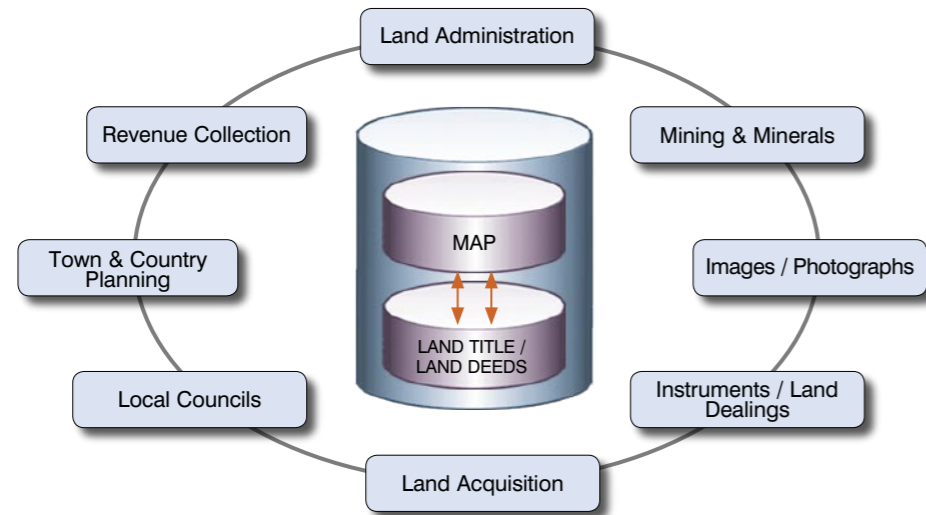
Superimposition of Orthophoto and Cadastral Map

An Intelligent & Integrated Approach to All Land Matters

Good land administration is an essential element for good governance of any country. It is a fact that all development projects begin with identifying and acquiring a suitable parcel of land. Increasingly, most development projects depend on Land Information System with GIS capabilities for planning, managing and decision making.

i-SALaM is an integrated land information system that supports a full range of business processes on all land matters. The key strength of this solution lies in its single interface for all land matters with GIS capabilities and its modular architecture that allows modules to be implemented independently.

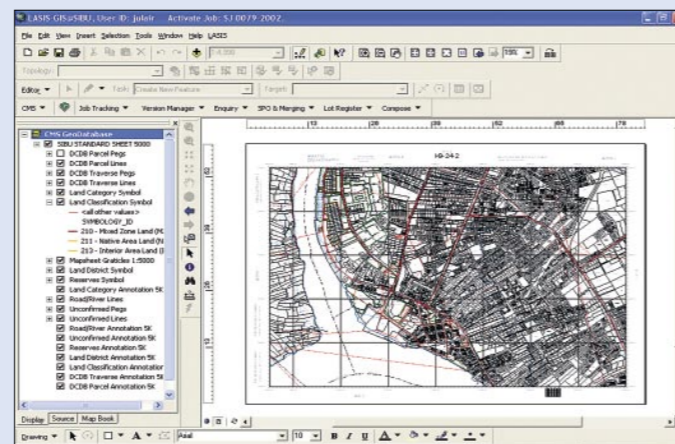
i-SALaM Architecture



Modules

1. Cadastral Map

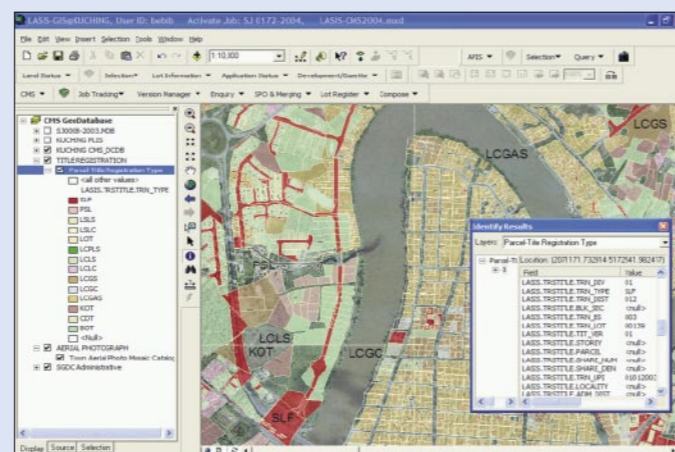
- Maintenance of a comprehensive and intelligent Map Database
- Instant production of cadastral maps of any scales, themes and sizes
- Provide immediate queries on Cadastral Maps
- Facility for graphical analysis of Land Applications and Land Titles to facilitate decision making
- Automated updating of Cadastral Map through importing of completed GIS file from survey plan
- Configurable/flexible GIS data layer presentation



Cadastral Map Production

2. Land Administration

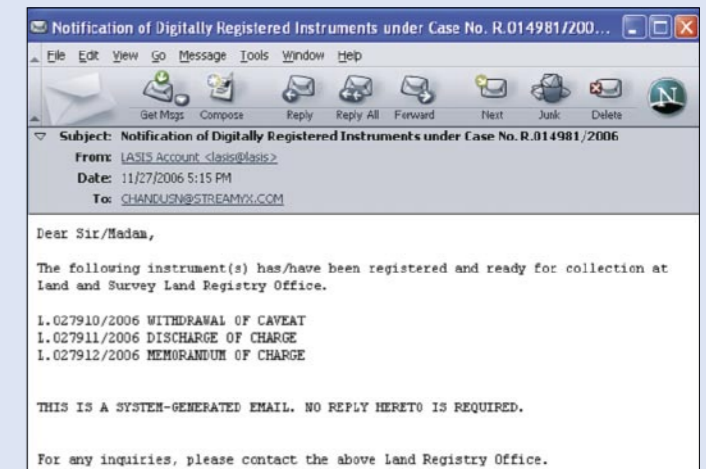
- Facilities for management of land to the most profitable and beneficial use to the society
- Facilities for efficient processing and monitoring of land applications
- Build land applications database and enable fast and accurate access to the information
- Provide spatial analysis and statistics on land application to facilitate decision making
- Expedite preparation of land titles/deeds using data from land applications processing



Graphical Analysis of Titles / Deeds Information

3. Titles & Instruments Registration

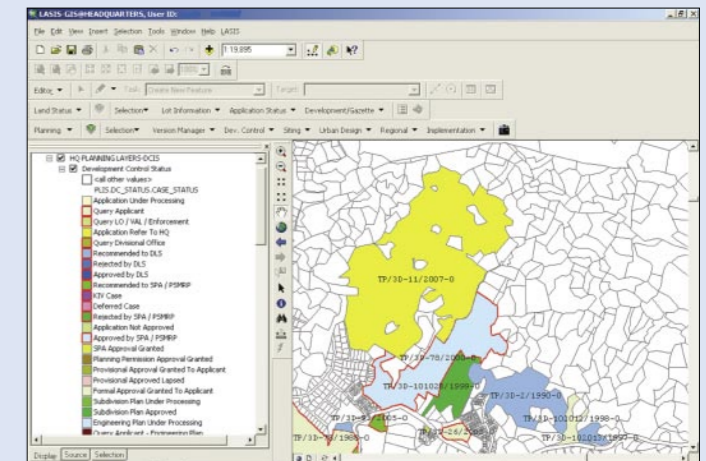
- Provide facility for speedy preparation and registration titles and instruments/land dealings
- Ability to process more than 50 nature of instruments/land dealings automatically
- Automated maintenance of digital rent ledger and personal profile
- Provide mechanism to ensure data integrity between paper and digital title information
- Provide immediate statistics to facilitate decision making
- Security mechanism to ensure a secure legal registered database
- Automated e-mail or SMS notification upon registration of land



E-mail Notification Upon Successful Registration

4. Town & Country Planning

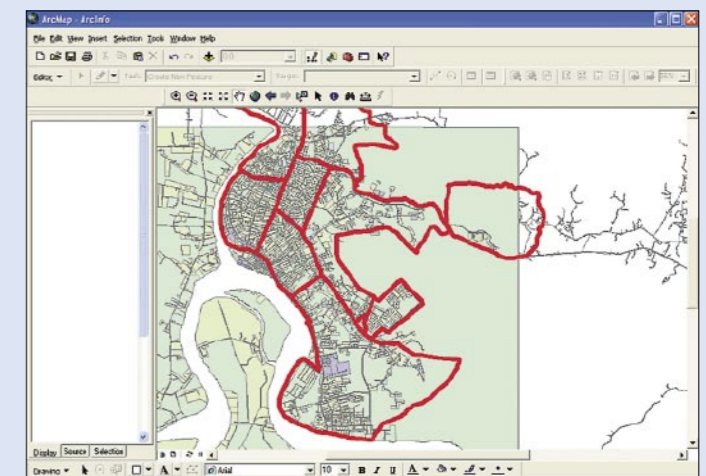
- Facilitate efficient plan making
- Expedite Statutory Planning Process such as application for development of land
- Expedite processing of application for site by Government and private organizations
- Provide facilities for planning, implementing & monitoring development projects
- Provide facilities for keeping records of regional, sub-regional, feasibility, EIA and other studies reviewed
- Provide facilities to formulate & design various types of plan with the best land use combinations



Status of Applications for Development

5. Local Councils (LAGIS)

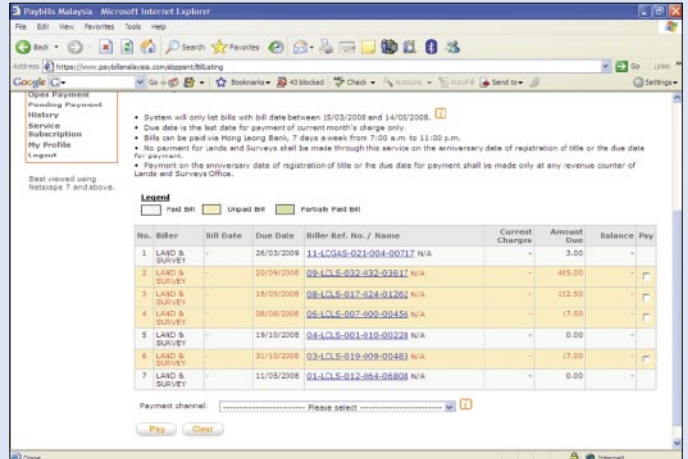
- Map Management
- Facility Management
- Rating and Valuation Management
- Building Plan Management
- Road Furniture Management
- Public Request management
- Zoning Management
- Parking Management
- Enforcement Management
- Public Health Management



Depict Designated Zone Area

6. Revenue Collection

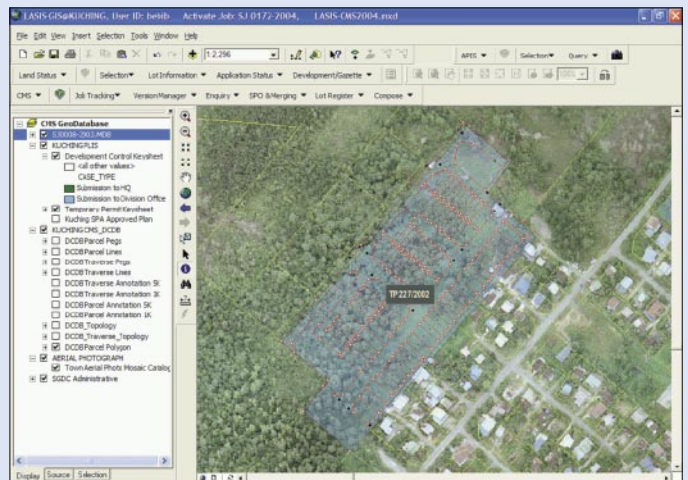
- On-line payment anytime and anywhere
- Automated update of payment details to digital rent ledger
- System compute current land rent and premium
- System generate surcharge and penalty automatically
- Automated journalisation of deposit to revenue upon registration of land titles



On-line Payment Of Land Rent and Premium

7. Images & Photographs

- Build a database of images and photographs such as aerial photographs, orthophotos and satellite images
- Expedite decision on application for development without going on site for inspection
- Ease in identifying suitable site for development projects
- Facility for superimposition of proposed development plan, cadastral map, images and photographs



Superimposition of Proposed Development Plan, Cadastral Map and Orthophoto

8. Land Acquisition

- Facility to process land acquisition
- Build a database of land for public purposes
- Build a database pertaining to market value of properties
- Facilitate efficient plan production
- Facilitate assessment of market values, land rent and premium
- Automation of Gazette Notification
- Automation of Memorandum require for land acquisition
- Expedite valuation services

9. Mining & Minerals

- Build a Mining and Minerals database covering Mining License, Quarry License, Revenue License data such as license fees and mining royalties
- Provide a master graphic database to avoid overlapping of mining areas and for monitoring and reporting purposes
- Provide facility for efficient production of mining maps and plans
- Automated generation of reminders to defaulters for not fulfilling terms and conditions
- Generation of standard and on-request reports to facilitate decision making

SARAWAK INFORMATION SYSTEMS SDN BHD

Head Office:

Level 3, Wisma Bapa Malaysia
Petra Jaya, 93502 Kuching, Sarawak, MALAYSIA
Tel: (60) 82-444199 Fax: (60) 82-444211

Call Centre:

Tel: (60) 82-236633 Fax: (60) 82-235522
Email: helpdesk@sains.com.my

Business Enquiries:

Tel: (60) 82-426733 Fax: (60) 82-423533
Direct Line: (60) 82-422472
Email: service@sains.com.my